

Mains electricity

230 VAC/50 Hz max 0.05 A

Standby power

0.3 W

External operating temperature

-25 to +35 °C

Dimensions

46x46x18 mm

Protection

Overtemperature software

Short circuit protection

DALI bus

Max 64 DALI loads

Guaranteed supply current 128 mA

Maximum supply current 150 mA

Short circuit protection activates after 2 seconds,
recovers after 13 seconds.

Basic insulation

Max cable length 300 m (1.5 mm²)

Radio

2.4 GHz mesh

Bluetooth®

Radio range

Up to 10 m indoors.

The Plejd mesh technology extends the range by
allowing the units to communicate with each other.

RISK OF INJURY TO PERSON OR PROPERTY

All work on the appliance must be
carried out by an authorized electrician.
National laws and regulations
must be followed.

Compliant to standards

Hereby, Plejd AB declares that the radio
equipment type DAL-01 is in compliance with
Directive 2014/53/EU.

The full text of the EU declaration of conformity
is available at the following internet address:
plejd.com



Plejd AB

Kroksläotts fabriker 27A

431 37 Mölndal

Sweden

Manufacturer | Plejd AB

Country of manufacture | Sweden

EN

Plejd

DAL-01

INSTALLATION MANUAL

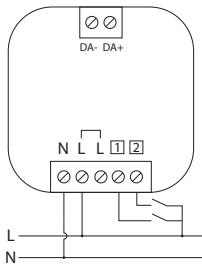
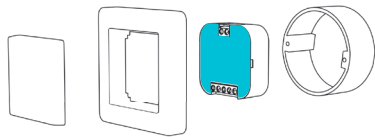


Further information can be found
in the **Plejd** app or at **plejd.com**

1 Connect the product

Install the product in the appliance box behind the push button/box lid or secure it with a Mounting clip (MNT-01, not included) on the wall or DIN rail.

Connect the product according to the wiring diagram. The module comes with a built-in power supply, so there is no need to use a dedicated DALI power supply for the DALI bus.



Control inputs 1 2

Control inputs 1 and 2 can be used for control using:

- Push button (preset)
- Light switch
- Motion sensor (with neutral conductor)

The inputs can also be used to wirelessly control one or more products from Plejd. A double click can be used to activate lighting scenes.

The settings are easy to adjust in the app.

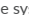
2 Download the app and follow the instructions


Download the Plejd app via the App Store or Google Play.

After supplying power to the unit by following the relevant wiring diagram, use the app to complete the installation. This requires Internet connection and Bluetooth® on your phone/tablet. You do not need any additional equipment to get started.

It's simple to configure all relevant settings in the Plejd app. The app can be used to schedule the lighting using the astro/time schedule, control lighting, and wirelessly sync control switches and scenes.

3 Hand over the Plejd system

Hand over the Plejd system to your customer by writing the system code on the included sticker . You'll find the code in the app once you have completed the installation.

Place the sticker in the distribution box and give the welcome folder  to the customer.

Support

In the event of any technical questions, please contact Plejd customer service.

E-mail: support@plejd.com | Phone: +46 (0) 10 203 89 91