

Light data

Luminous flux
2x300 lm

Tunable white
2,200–4,000 K

Beam angle
45°

Dimming
0.1–100 %

RA
90

SDCM
3

L70/B50
60,000 h
Ta 35 °C

Light source
LED (non replaceable)

Technical data

IP rating
IP45

Insulation class
Class I

Impact resistance
IK06

Protection
Electronic temp. protection

Permissible ambient
temperature
-25 to +35 °C

Battery backup
Battery life up to 10 years

Maximum power
consumption
8.3 W (2x4.15 W)

Energy efficiency class
F

Mains electricity
230 V~ 50 Hz

Power factor (PF)
0.9

Standby power
Pno, Psb: N/A
Pnet: 0.10 W

Maximum bypass current
16 A

Cable area
0.75–2.5 mm²

Radio

2.4 GHz mesh
Bluetooth®
<10 dBm

The Plejd mesh technology
extends the range by allowing
the units to communicate with
each other.

RISK OF INJURY TO PERSON OR PROPERTY

All work on the appliance must be carried out by
an authorized electrician. National laws and
regulations must be followed.

Declaration of conformity

Hereby, Plejd AB declares that the radio
equipment type OUT-01 is in compliance
with Directive 2014/53/EU.

The full text of the EU declaration of
conformity is available at the following
internet address: plejd.com/compliance

Support

In the event of any technical questions,
please contact our customer service:
support@plejd.com | +46 (0) 10 203 89 91

Plejd AB, Krokslätts Fabriker 27A
431 37 Mölndal, Sweden



Important information

Do not use the product if it has visible
signs of damage.

The light source of this luminaire is not
replaceable. When the light source reaches
its end of life, the whole luminaire shall
be replaced.



Disposal and recycling

This electrical product should not be
disposed of together with other household
waste. Contact your local recycling center
for guidance on electrical and electronic
equipment disposal.



OUT-01 INSTALLATION MANUAL



Further information can be found
in the **Plejd app** or at plejd.com

NOTE! Do not wire to dimmer.

Dimmer is built-in.

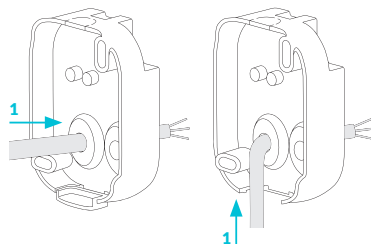
Make sure to **shut off the main power** before installing the OUT-01.



Do not cut cable grommet.
The IP rating is only valid
when it is undamaged.

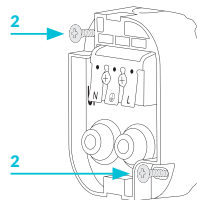
Install the product

Step 1. Push the cable through the grommet. The cable can be routed from the house wall directly behind the wall fastener or underneath it by removing the bottom tab.



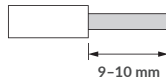
Step 2. Mount the wall bracket with screws suitable for the exterior wall (screws not included). See image on the next page for distance between mounting holes.

The arrow above "UP" in the lamp should point upwards. The IP rating is only valid when the wall bracket is installed in the correct direction.



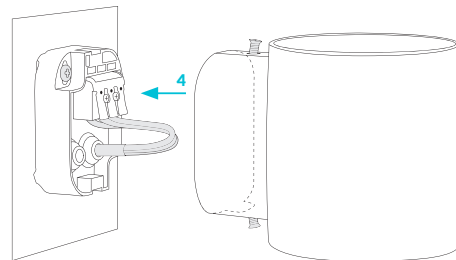
Step 3. Connect the cables to the terminal block.

Connect Live (L), Neutral (N), and Ground (⓪) according to the markings. (Do not wire to dimmer.)

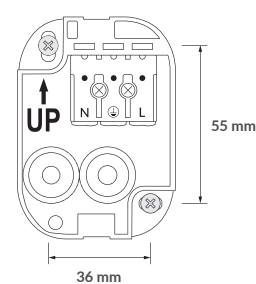


Step 4. Press the lamp onto the wall bracket.

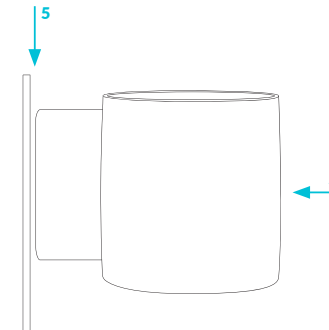
The opening for cable in the bottom of the lamp should be downwards, and the pins in the lamp should be upwards.



Distance between holes



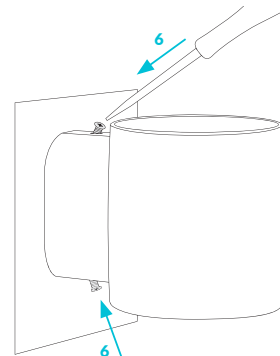
Step 5. Continue pressing the lamp against the wall. The distance from the wall when OUT-01 is mounted is 1.5 mm.





Follow the instructions in the app

Download the Plejd app on the App Store or Google Play. Use the app to complete the installation and group your light fixtures. Setup requires Bluetooth® and an internet connection.

Step 6. Secure it with two screws, one at the top and one at the bottom. The screws are slightly angled from the wall for easy access. Make sure that OUT-01 is secured properly before you finish the installation.



Hand over the Plejd system

Once you have completed the installation, you will find the system code in the app. Write the code on the included sticker . Place the sticker in the distribution box and give the welcome folder  to the customer.