

Mains electricity

230 V/50 Hz

Standby power

0,3 W

External operating temperature

-20 to +35 °C

Dimensions

46x46x18 mm

Load type

1-pole or 2-pole with relay

Trailing edge

Leading edge

Protection

Over temperature software

Over temperature hardware

Overload software

Overload hardware

Radio

2,4 GHz mesh

Bluetooth®

Radio range*

Up to 10m indoors.

*The Plejd mesh technology extends the range by allowing the units to communicate with each other.

RISK OF INJURY TO PERSON OR PROPERTY

All work on the appliance must be carried out by an authorised electrician. National laws and regulations must be followed.

Compliant to standards

Plejd AB hereby declares that the product complies with the norms and guidelines pursuant to Directive 2014/53/EU.

EN 60669-1

EN 60669-2-1

EN 301489-1

EN 301489-17

EN 300328



Plejd AB

Kroksläatts fabriker 27A

431 37 Mölndal

Sweden

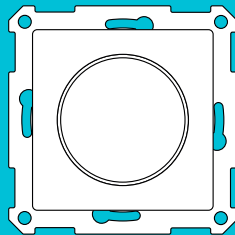
Manufacturer | Plejd AB

Country of manufacture | Sweden

Plejd

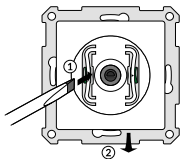
VRI-02

INSTALLATION MANUAL



Further information can be found in the Plejd app or at [plejd.com](https://www.plejd.com)

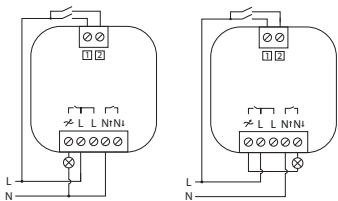
1 Remove the cover



2 Connect VRI-02

1-pole switching of phase (L)

2-pole switching of phase (L) and zero (N)



Control via control inputs 1 2

Control inputs 1 and 2 can be used for control using e.g. push-button, or motion sensor. The inputs can also be used to wirelessly control one or more products from Plejd. A double click can be used to activate lighting scenarios. The settings are easy to adjust in the app.

NOTE! During installation the product is non-dimmable.

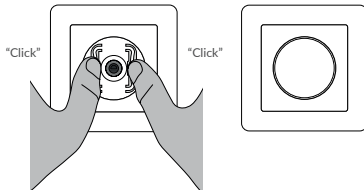
Use the app to configure before use.

Load*

230 V halogen/incandescent	0-300 W
230 V LED-light source/actuator (trailing edge)	0-200 VA
230 V LED-light source/actuator (leading edge)	0-100 VA
Electronic transformers (12 V halogen)	0-300 VA

* Do not use with fluorescent tubes, conventional transformers or low-energy bulbs.

3 Install frame and center plate



2 Download the app and follow the instructions

Download the Plejd app via the App Store or Google Play.

After supplying power to the unit based on one of the wiring diagrams, you can use the app to install the lighting. This requires Internet connectivity and Bluetooth® on your phone/tablet. You do not need any additional equipment to get started.

With the help of the app, it's simple to configure all relevant settings. The app can be used to schedule the lighting using the astronomical clock or timer, control lighting, and wirelessly sync control switches and scenarios.

3 Hand over the Plejd system

Hand over the Plejd system to your customer by writing the system code on the included sticker . You'll find the code in the app once you have completed the installation.

Place the sticker in the distribution box and give the welcome folder to the customer.

Support

In the event of any technical questions, please contact Plejd customer services.

E-mail: support@plejd.com | Phone: +46 (0)10 203 89 91