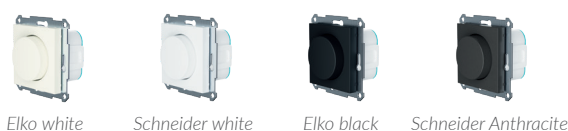


Dimmer LED

VRI-02



Dimmer LED with the possibility of 1- or 2-pole breaking. The product can be controlled wirelessly via the app or through other products from Plejd.

- Up to 300 W power.
- Local control with two inputs via a momentary pushbutton and/or an accessory from Plejd.
- Adjustable minimum, maximum and start level.
- Time functions, such as an astronomical clock and weekly timers.
- Double clicking the dial can be used for controlling a scenario.
- Center plate for Elko RS/Plus or Schneider Exxact is included.

Load

230 V LED light source/driver (trailing edge)	0-200 VA
230 V LED light source/driver (leading edge)	0-100 VA
230 V halogen/incandescent	0-300 W
Electronic transformers (12 V halogen)	0-300 VA

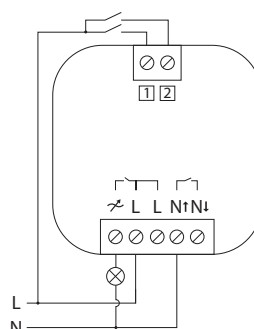
Do not use with:
Fluorescent lamps, conventional transformers or low-energy lamps.

The product is installed in the appliance box or is secured with a Plejd Mounting clip (MNT-01, not included) on the wall or DIN rail.

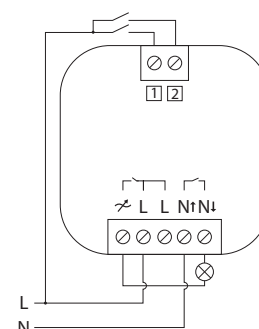
Article list for Dimmer LED

Elko RS/Plus white	VRI-02-EW
Schneider Exxact white	VRI-02-SW
Elko Plus black	VRI-02-EB
Schneider Exxact anthracite	VRI-02-SA

1-pole



2-pole



MAINS VOLTAGE

230 V/50 Hz

STANDBY POWER

0.3 W

EXTERNAL OPERATING TEMPERATURE

-20 to +35 °C

DIMENSIONS

Back 46x46x18 mm
Center plate 55x55 mm
Dial Ø38 mm

LOAD TYPE

1-pole or 2-pole with relay
Trailing edge
Leading edge

PROTECTION

Overheating – software
Overheating – hardware
Overload – software
Overload – hardware

CABLE AREA

Connections: 0.5-4.0 mm²

RADIO

2.4 GHz mesh
Bluetooth®

RADIO RANGE

Approx. 10 m indoors.
The Plejd mesh technology extends the range by allowing the units to communicate with each other.

COMPLIANT TO STANDARDS

2014/53/EU
EN 60669
EN 301489
EN 300328
EC 1275/2008

